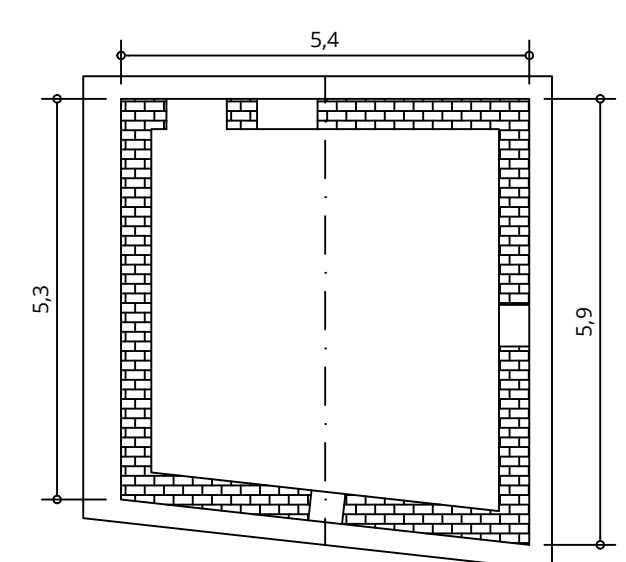
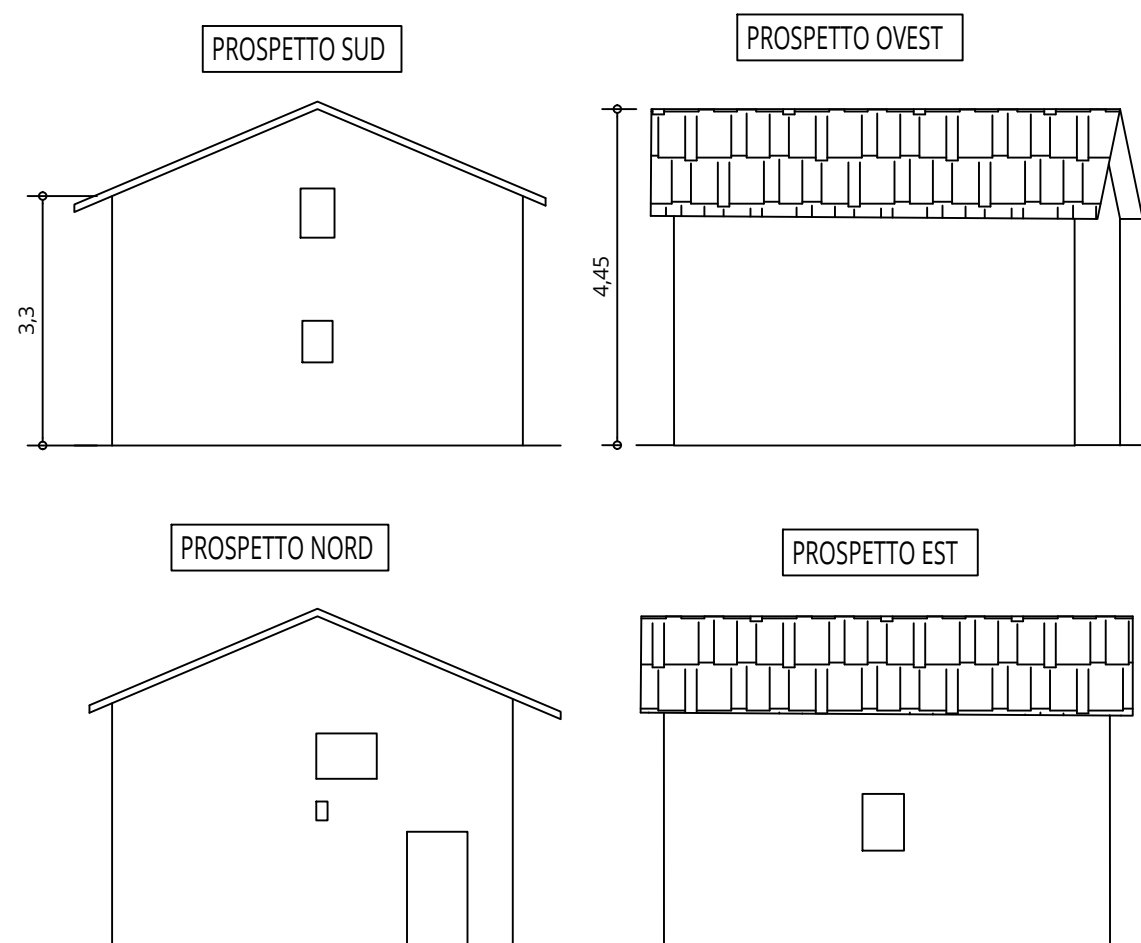


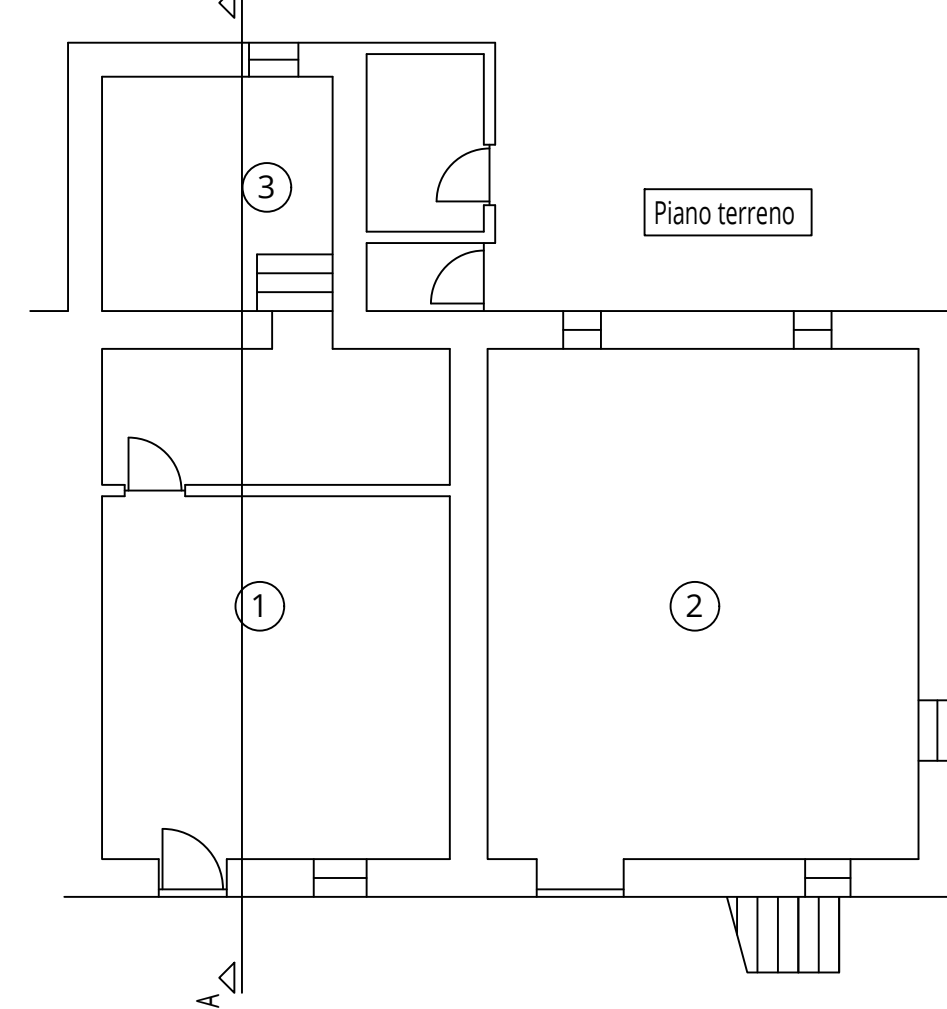
FABBRICATO TIPO "A"



Calcolo volume:
Superficie in pianta = 30,24 m²
H media = (3,3+4,45)/2 = 3,875 m
Volume totale = 117,18 m³



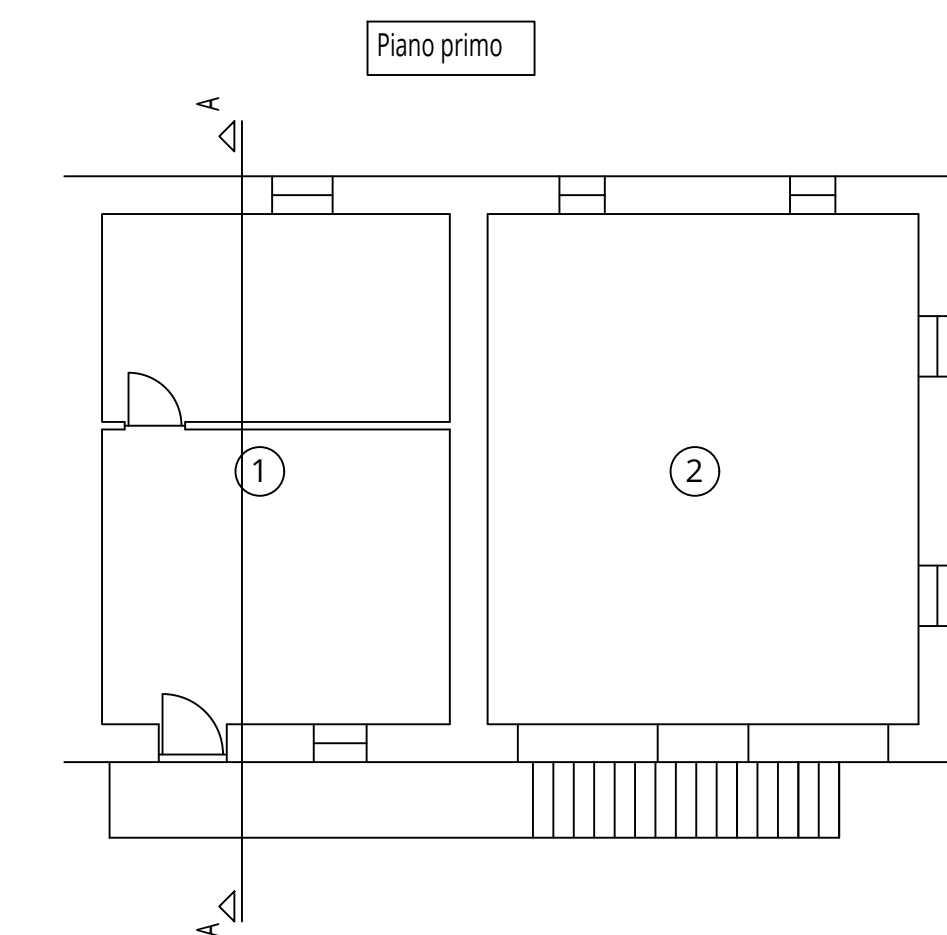
FABBRICATO TIPO "B"



Calcolo volume 1:
Superficie in pianta = 39,5 m²
H = 3,2 m
Volume totale = 126,4 m³

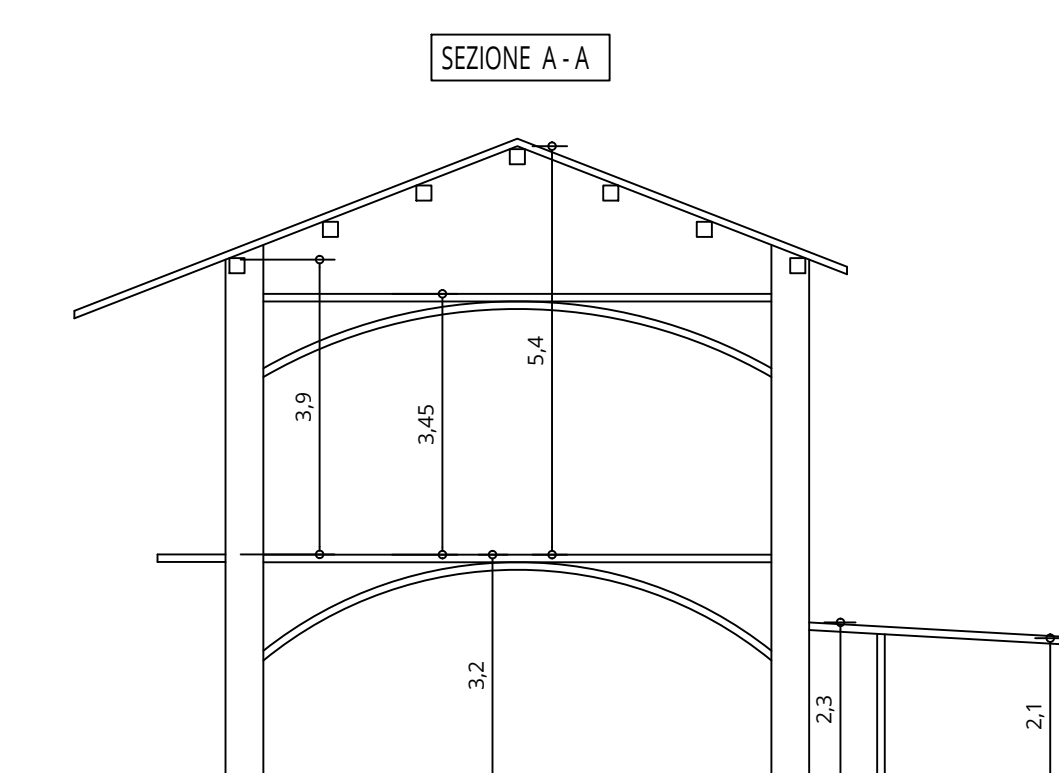
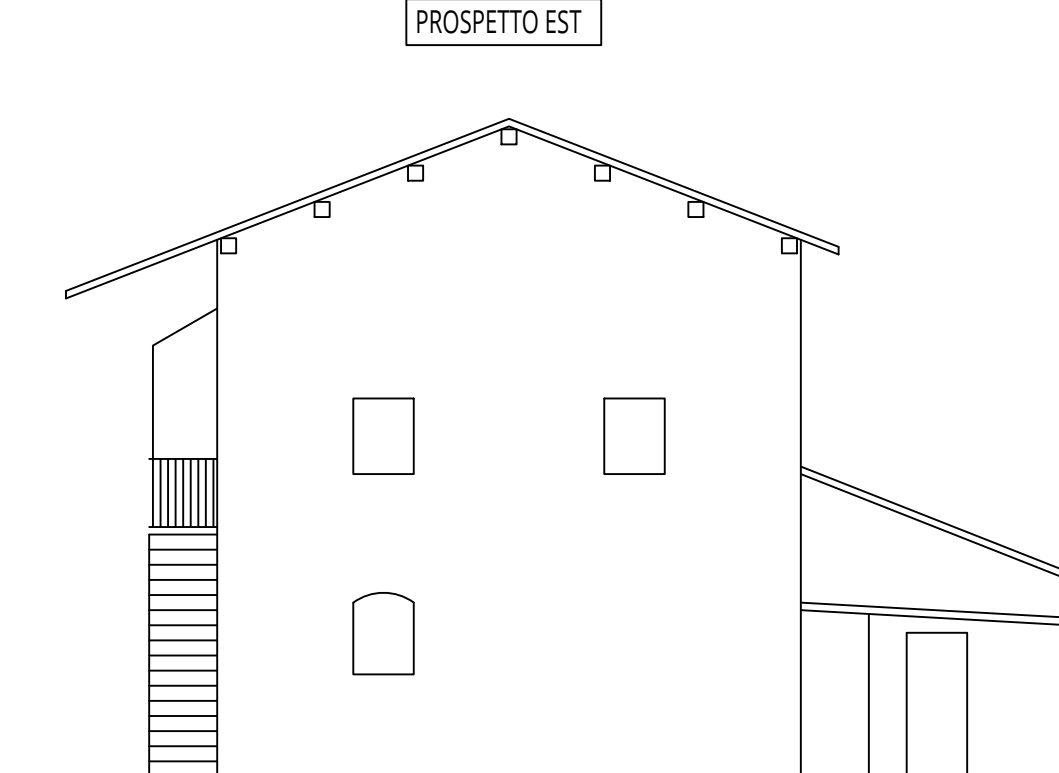
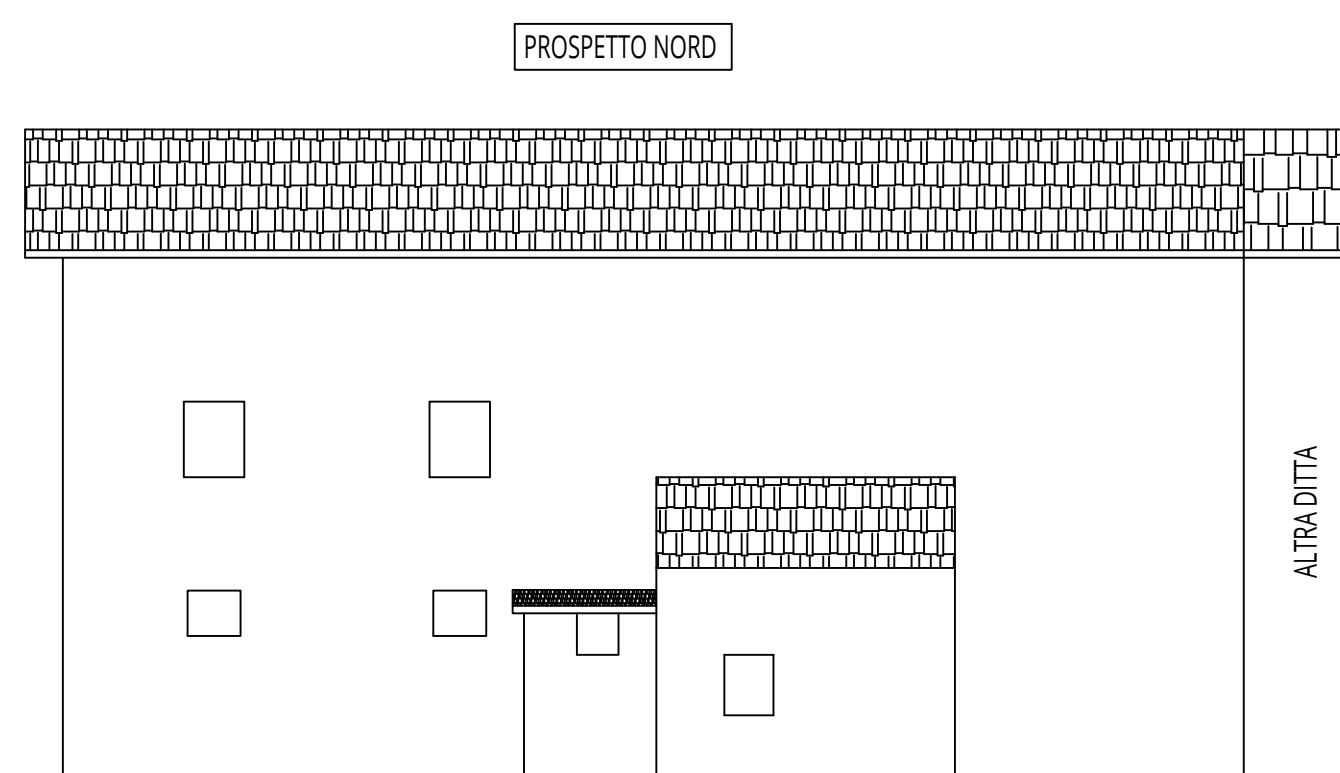
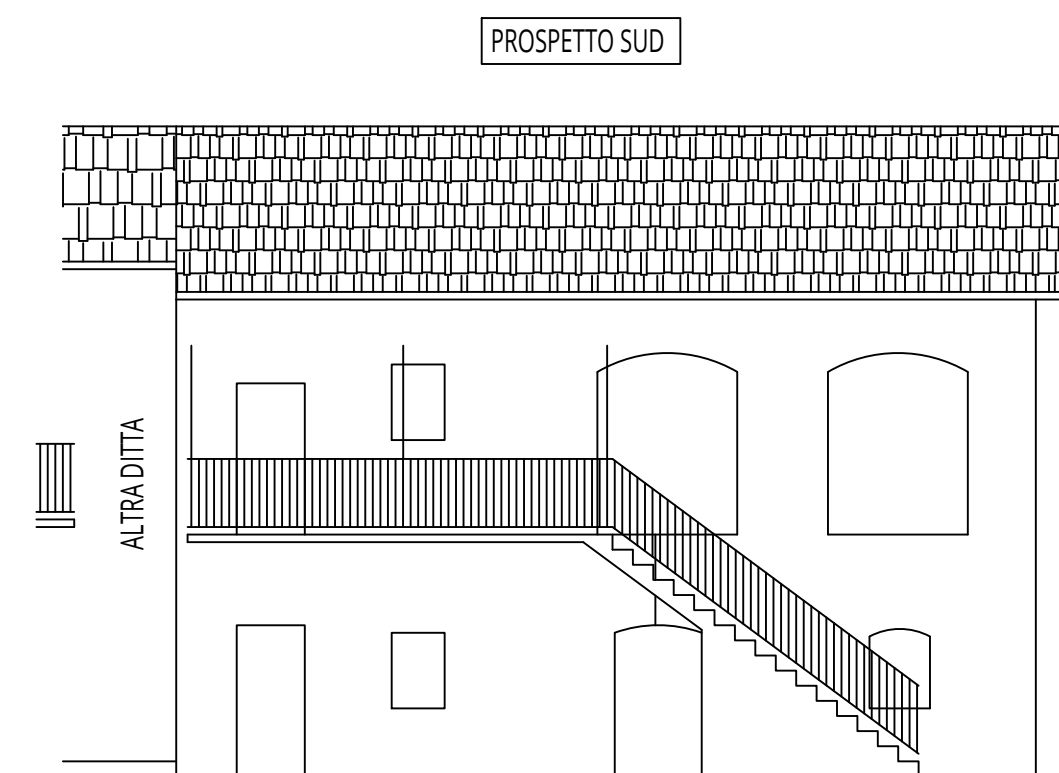
Calcolo volume 2:
Superficie in pianta = 50,0 m²
H = 3,2 m
Volume totale = 160,0 m³

Calcolo volume 3:
Superficie in pianta = 14,02 + 6,04 m²
H1 = 3,4 m H2 = 2,2 m
Volume totale = 47,67 + 13,28 = 60,95 m³

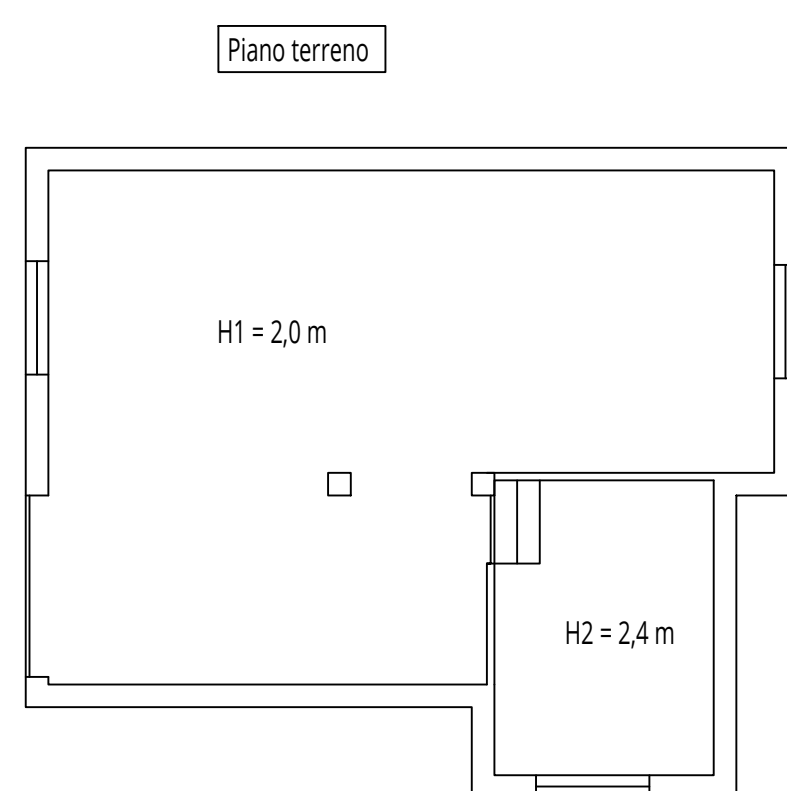


Calcolo volume 1:
Superficie in pianta = 39,5 m²
H = 3,45 m
Volume totale = 136,28 m³

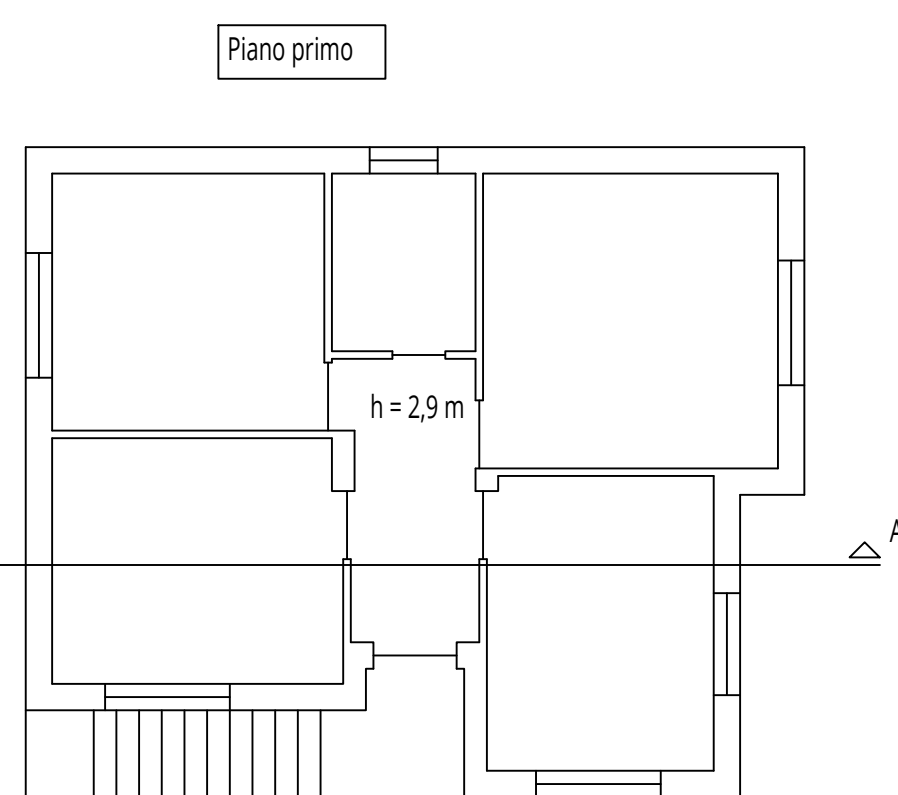
Calcolo volume 2:
Superficie in pianta = 50,0 m²
H media = (3,9+5,4)/2 = 4,65 m
Volume totale = 232,5 m³



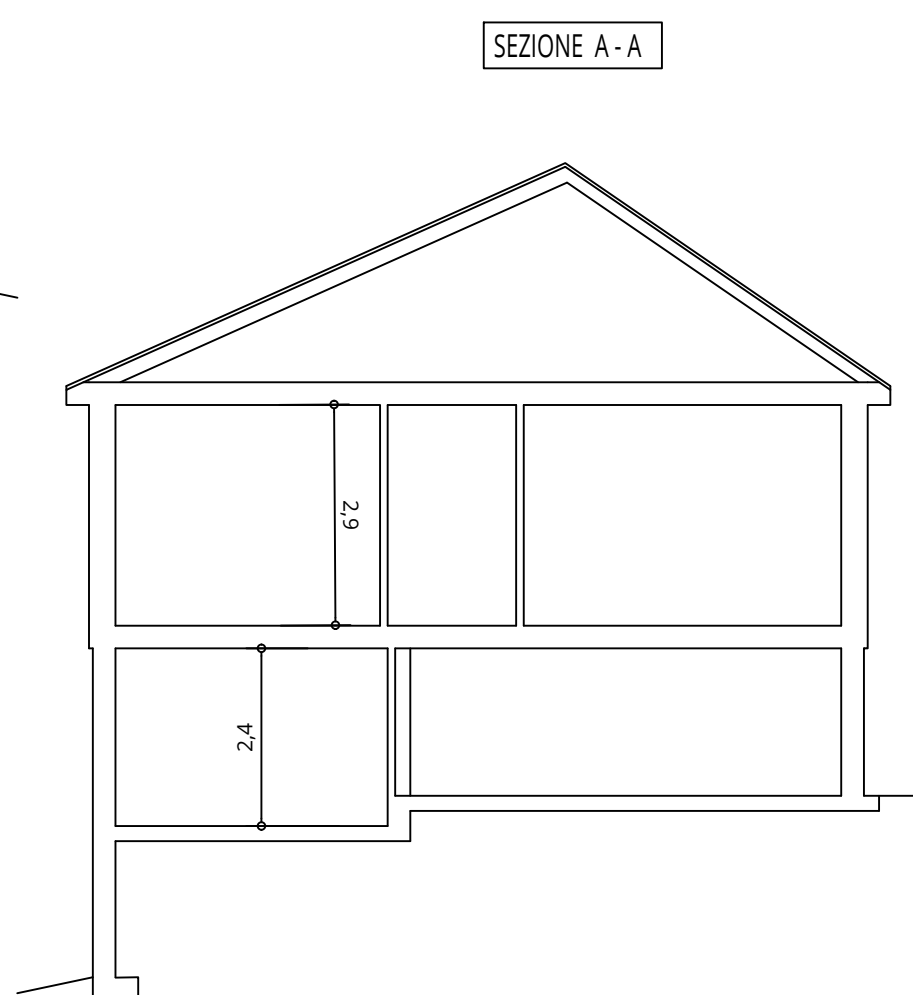
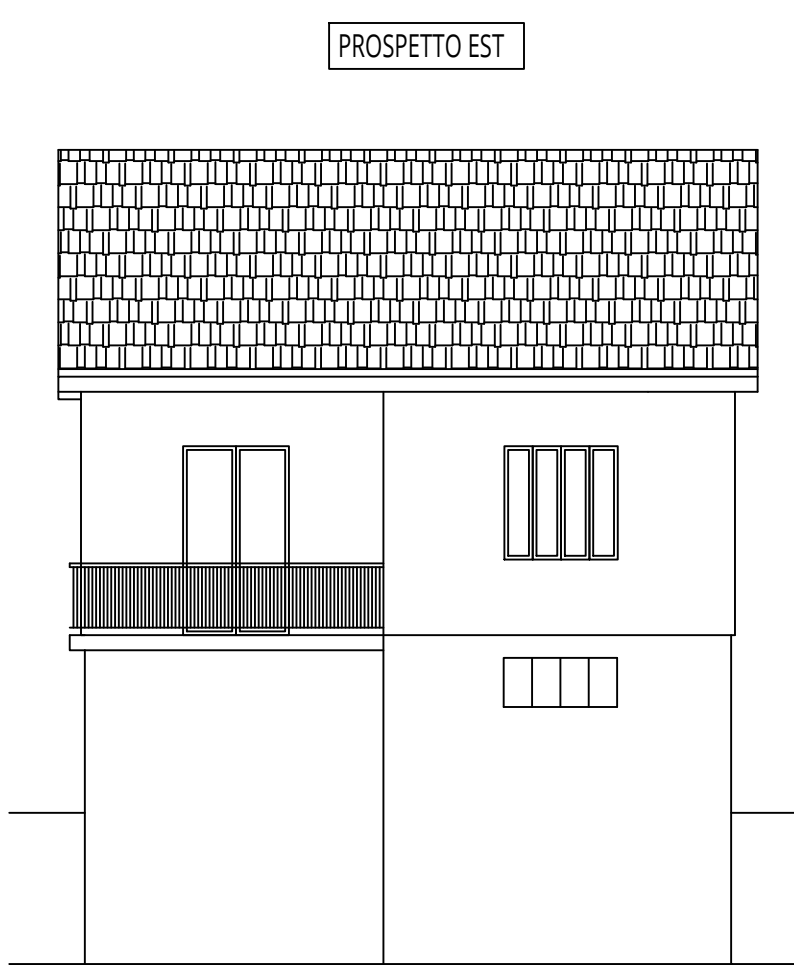
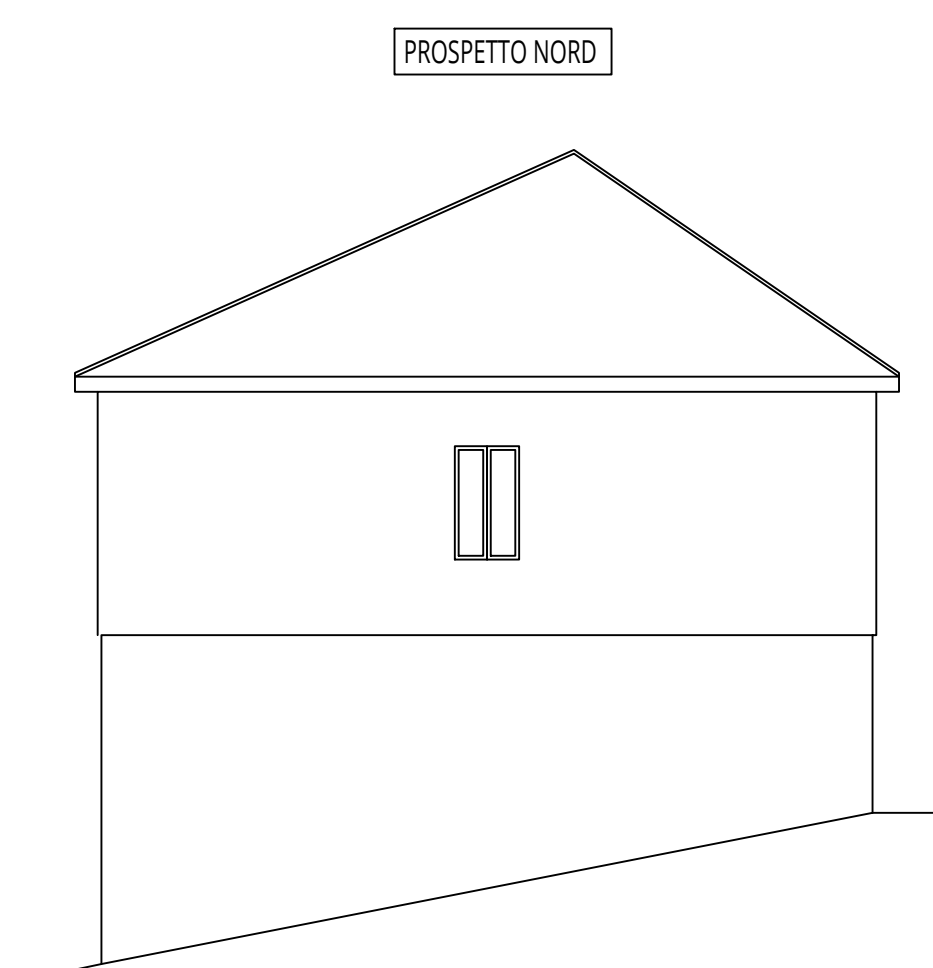
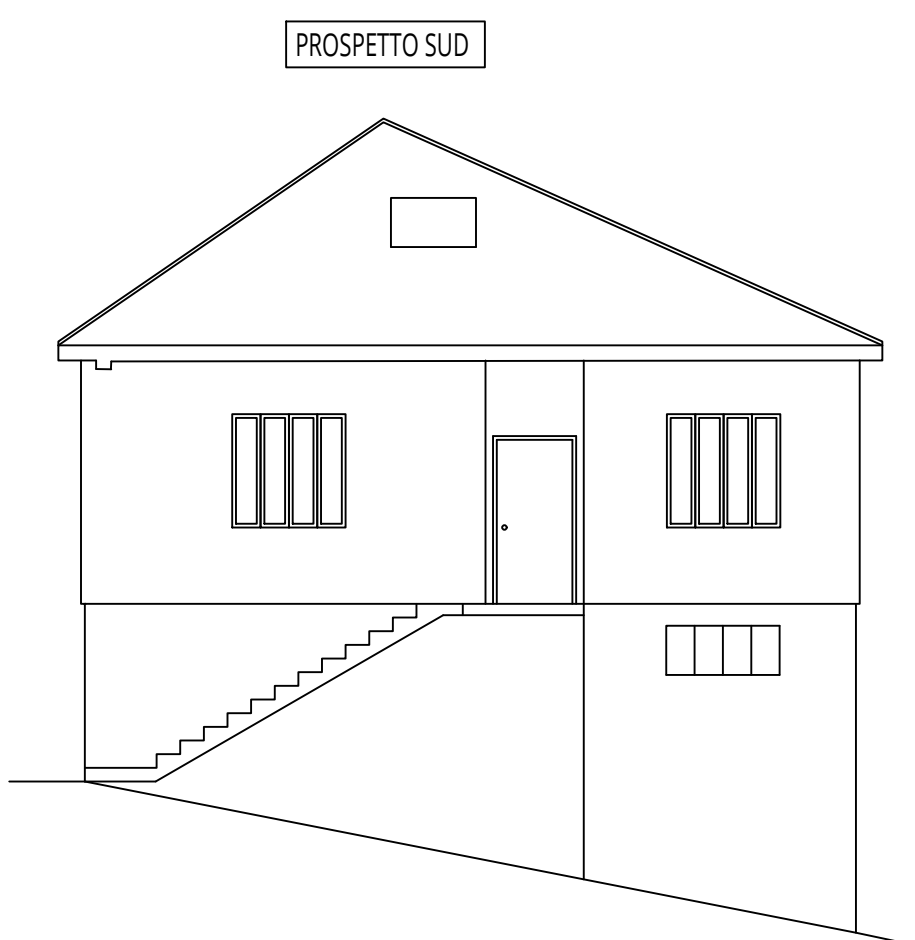
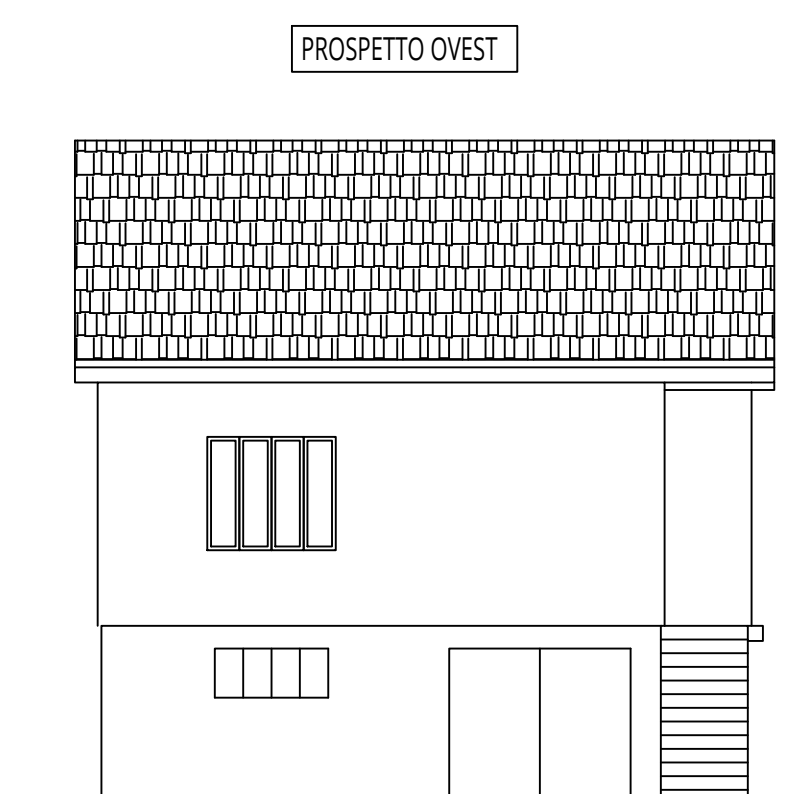
FABBRICATO TIPO "C"



Calcolo volume:
Superficie in pianta = 63,7 + 13,8 m²
H1 = 2,3 m H2 = 2,7 m
Volume totale = 63,7x2,3+13,8x2,7 = 183,77 m³



Calcolo volume:
Superficie in pianta = 77,8 m²
H = 3,2 m
Volume totale = 248,96 m³



CALCOLO DEI VOLUMI:

- Volume residenziale:

- 1) edificio "A" = 0 m³
- 2) edificio "B" = 262,68 m³
- 3) edificio "C" = 248,96 m³

TOTALE = 511,64 m³

- Volume non residenziale

- 1) edificio "A" = 117,18 m³
- 2) edificio "B" = 453,45 m³
- 3) edificio "C" = 183,77 m³

TOTALE = 754,40 m³

Comune di Vignolo

OGGETTO:

Piano esecutivo convenzionato per Demolizione fabbricati e successive costruzioni di fabbricato residenziale bifamiliare e edificio ad uso garage con soprastante magazzino

COMMITTENTI: Sig.ri GHIBAUDO Stefano e Ivana

COMMITTENTI:

IL TECNICO:

TAV. 3.1 Planimetria intervento - Stato di fatto

Data Giugno 2019

Agg.

AP STUDIO DI INGEGNERIA
ALESSANDRO PERRON

Tel. 333 9358693 - mail: alessandro.perron@mtgc.net
via Negrelli, 11 - 12100 Cuneo - P.I. 03702020045